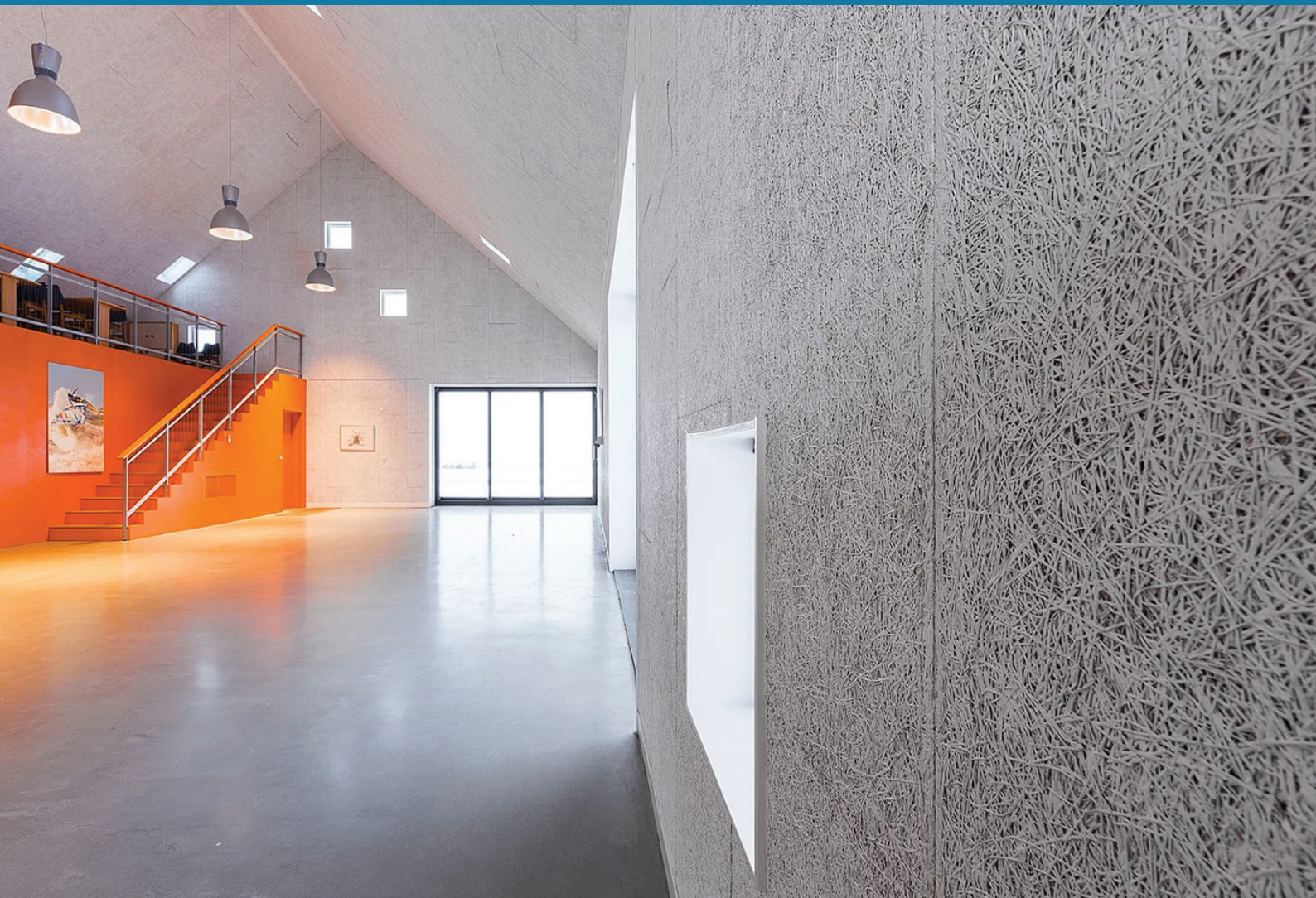


M O V A W A L L

Troldtekt Cement-Bonded Wood Wool Acoustic Panels



Troldtekt is the natural choice for ceiling and wall cladding in all types of architecture. From schools and sports halls to cultural buildings and offices. With a wide-range of colours, textures and flexible design solutions as well as the option of customized project solutions, you are completely free to choose the exact architectural style you are after.

Overview

Troldtekt panels are naturally strong, withstands humid environments and offers effective fire protection.

The combination of wood and cement results, in the unique sound-absorbing properties of the Troldtekt panels, guaranteeing effective acoustics. Integrate lighting, speakers in the Troldtekt ceiling of your choice.

Cradle to Cradle certified at silver level certification granted, among other things, because the acoustic panels contain no harmful substances and can be returned to the natural compost.

Core Material: Cement bonded wood wool fibre core
Acoustic Performance: Class A to Class D Sound Absorption Class (depending on ceiling void/wall cavity depth)



Colour Options

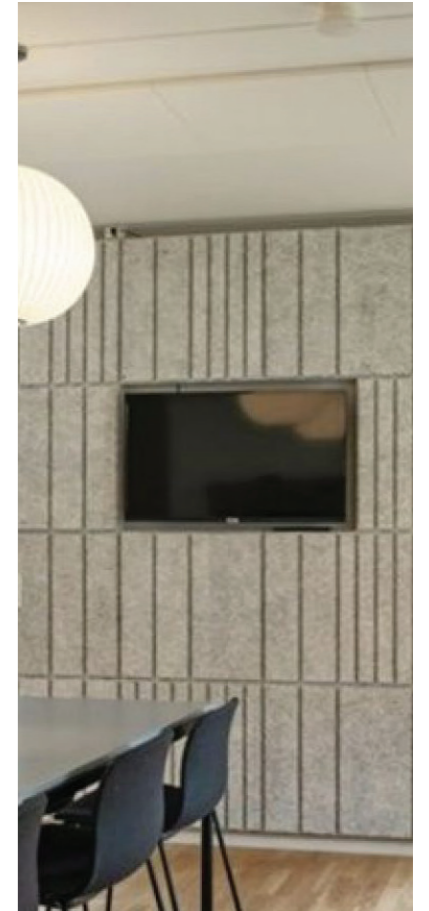
Troldtekt is often preferred unpainted and completely natural. Troldtekt is produced from either white or grey cement and in its natural form, Troldtekt is available in two variants; natural wood and natural grey.

Troldtekt is a natural material, and colour variations will occur for unpainted panels in natural grey and natural wood. These colour variations are most visible on the grey panels, where it is only the cement that gives Troldtekt the grey colour. To achieve an even distribution of the colour tones, we recommend mixing the panels during installation. White is the most popular colour for Troldtekt, but the panels can be painted to almost any RAL/NCS colour code.

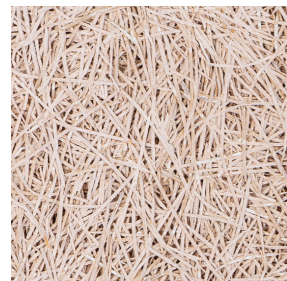
The painted Troldtekt panels are spray-painted with water-based paint in our modern painting facility. The paint nozzles spray paint from several angles to ensure uniform colour and good coverage. If you prefer, you can also paint the Troldtekt panels yourself using a long-haired paint roller or a hand sprayer. Please note, however, that the open structure of the Troldtekt panels makes it difficult to achieve the same uniform coverage.

Please note that the colour shade can vary, depending on whether the paint is applied to natural wood or natural grey basis panels. For instance, the colour white 101 will appear warmer when painted on natural wood basis panels. For Troldtekt in black, grey or other dark colours, we always recommend natural grey basis panels to obtain better colour coverage.

For installation, we supply coloured screws to match the colour of the panels, in both standard colours and custom colours.



Structures



Extreme Fine
0.5 mm wood wool



Ultrafine
1.0 mm wood wool



Fine
1.5 mm wood wool



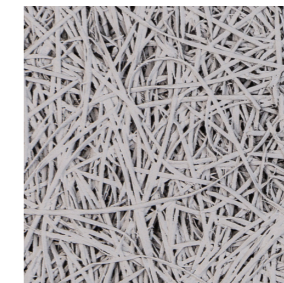
Coarse
3.0 mm wood wool



Natural Wood



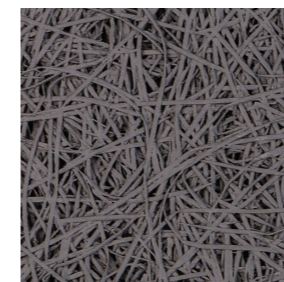
White (101)



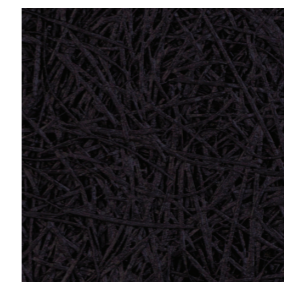
Grey (202)



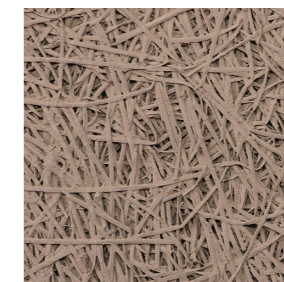
Natural Grey



Grey (208)



Black (207)



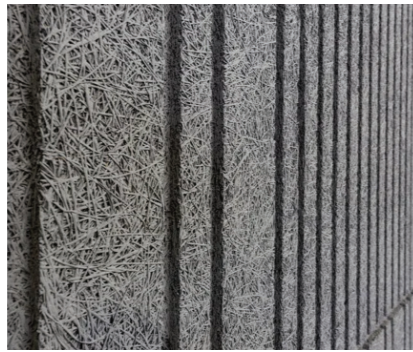
Clay (210) FUTURECEM



Custom Painted



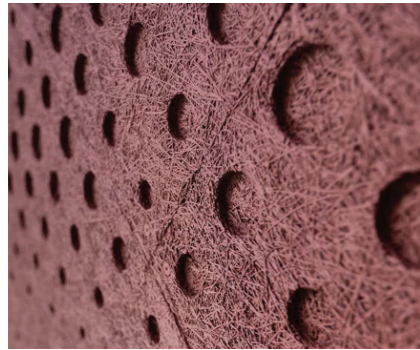
Troldtekt line



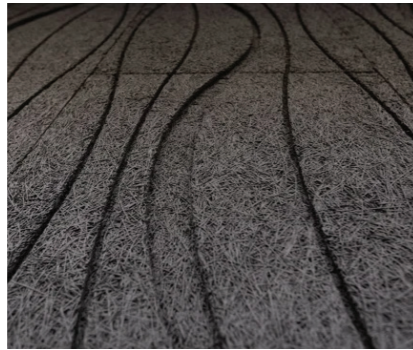
Line Design



Tilt Line



Dots



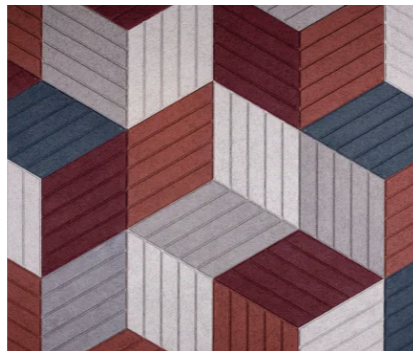
Curves



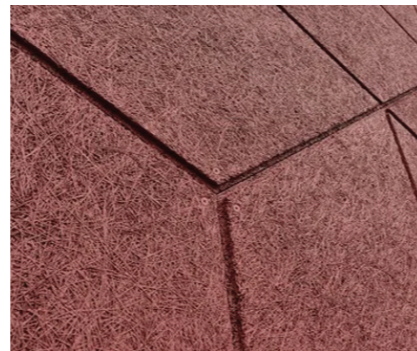
Puzzle



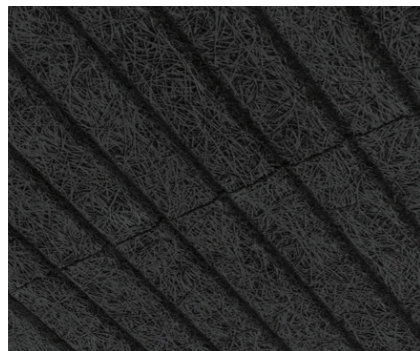
Tiles



Rhombe



Rhombe Mini



V-line 1-way



V-line 2-way

The classic Troldtekt acoustic panel. For ceiling and wall cladding in all types of building.

Troldtekt acoustic ceiling and wall panels are made from certified wood, a 100% natural material, and cement extracted from Danish mineral resources.

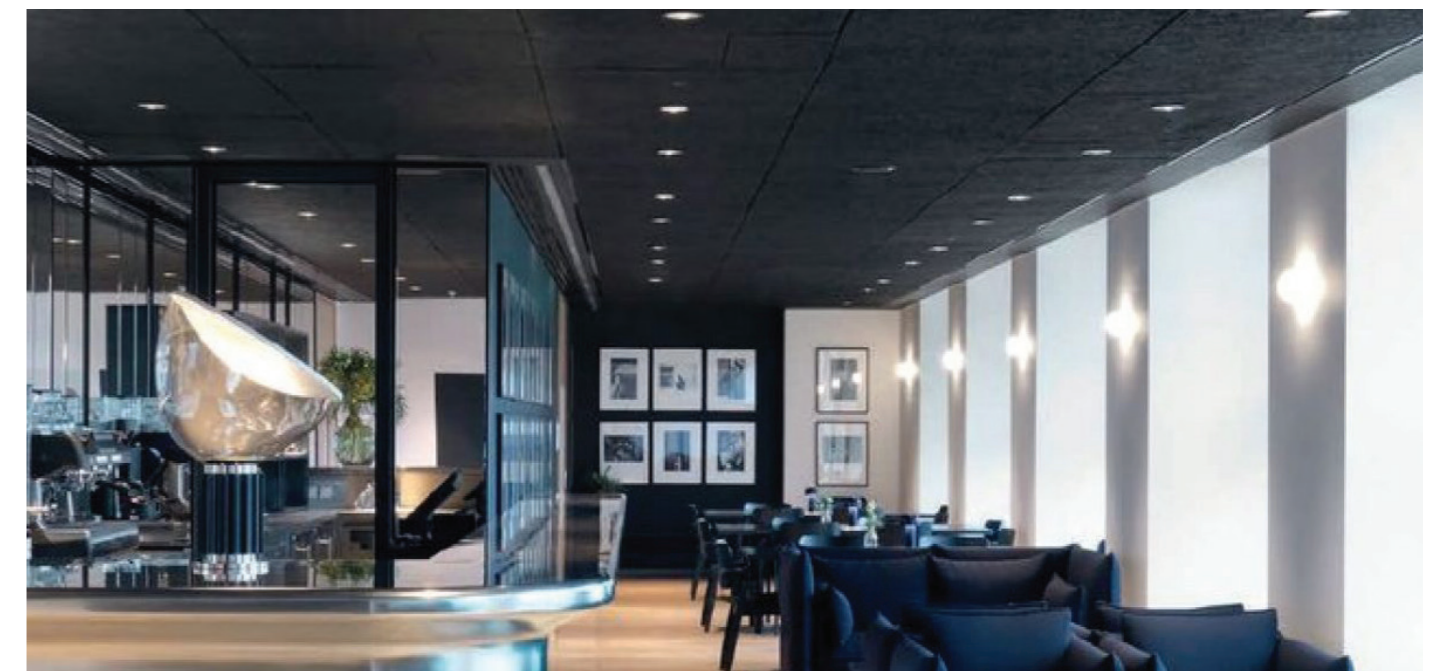
The combination of wood and cement creates Troldtekt's unique sound absorbing properties, ensuring good acoustics in any room. The material has a natural resilience and can handle moist environments, while also providing effective fire protection. The sustainability of the Troldtekt acoustic panels is documented throughout the entire product life cycle.

In terms of reaction to fire, Troldtekt acoustic panels have been tested in accordance with BS 476 and are "Class O" as designated in the British Building Regulations and have a Class 1 Spread of Flame classification.

Troldtekt acoustic panels can be installed directly onto wooden battens or in a suspended profile system. However, they are most often installed with underlying mineral wool in order to ensure the best sound absorption.

Width: 600mm
Length: 600mm / 1,200mm / 2,400mm

Thickness	25mm	35mm
Weight: Coarse	10.4 (kg/m ²)	15.0 (kg/m ²)
Weight: Fine	10.6 (kg/m ²)	13.9 (kg/m ²)
Weight: Ultrafine	11.4 (kg/m ²)	15.2 (kg/m ²)
Weight: Extreme Fine	11.7 (kg/m ²)	15.5 (kg/m ²)



Two-layer acoustic panel with a backing layer of sealed mineral wool. Time and space saving solution, ideal for the refurbishment of existing ceilings and for suspended and floating cloud ceilings.

Problems with noise and poor acoustics can be solved with a new acoustic ceiling. However, most people are daunted by the thought of having to remove the existing ceiling – a comprehensive process which causes inconvenience and generates dust. But this can be avoided. You install Troldtekt Plus directly on wooden battens fitted to the existing ceiling and this saves you the trouble of removing the old ceiling. Drop sheets and a rolling scaffold are all that is required and the refurbishment can be completed in just a few days.

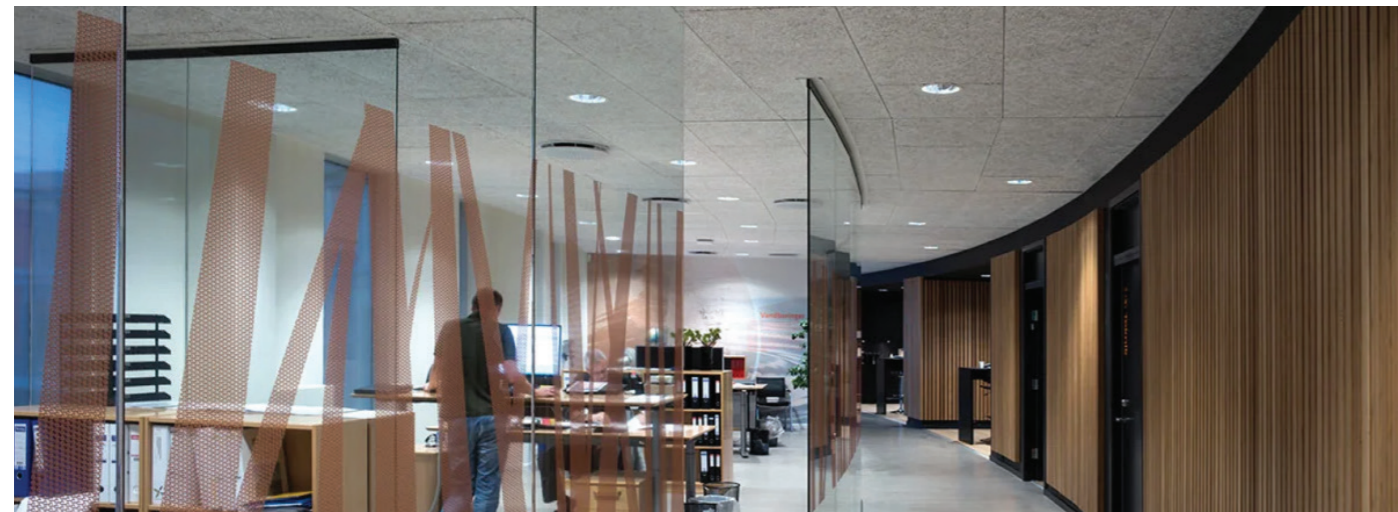
The Troldtekt series' two-layer acoustic panel, Troldtekt Plus, consists of a classic Troldtekt panel with a backing layer of sealed mineral wool. The backing layer is cut to size and set back from the edges of the panel so that it fits between profiles or wood battens.

Troldtekt Plus enables the acoustic ceiling and backing layer to be installed in one and the same workflow, saving construction time. Troldtekt Plus acoustic panels are ideal for the refurbishment of existing ceilings and for suspended and floating acoustic clouds. The Troldtekt Plus solution saves space and, with dimensions down to 47mm thick, you can achieve almost the same sound absorption properties as with a suspended Troldtekt ceiling and a separate layer of mineral wool.

With Troldtekt Plus, you can achieve almost the same sound absorption values as with a Classic suspended Troldtekt ceiling with mineral wool behind but with a lower fitting height. Troldtekt Plus is available with one 18mm or 40mm layer of mineral wool on the back.

Width: 600mm
Length: 600mm / 1,200mm / 2,400mm

Thickness	43mm (25+18mm)	53mm (35+18mm)	65mm (25+40mm)	75mm (35+40mm)
Weight: Fine	11.8 (kg/m ²)	15.2 (kg/m ²)	113.4 (kg/m ²)	16.7 (kg/m ²)
Weight: Ultrafine	12.6 (kg/m ²)	16.5 (kg/m ²)	16.5 (kg/m ²)	18.0 (kg/m ²)
Weight: Ex. Fine	12.9 (kg/m ²)	16.8 (kg/m ²)	14.5 (kg/m ²)	18.3 (kg/m ²)



Troldtekt A2 panels is the non-combustible one-layer acoustic panel in the Troldtekt range. It is installed in areas where there are stricter fire safety regulations, such as in means of escape.

Troldtekt A2 panels are CE-marked and comply with A2-s1,d0 fire safety requirements. The fire safety of the Troldtekt A2 panel is achieved exclusively by using special cement without the addition of any toxic fire-retardant additives.

Like the classic Troldtekt acoustic panels, the Troldtekt A2 panels have also achieved the Cradle to Cradle certification in the gold category because, among other things, they do not contain any harmful substances and can be returned to nature as compost.

The use of special cement rather than fire-retardant additives has the great advantage that the Troldtekt A2 panel visually looks like the classic Troldtekt acoustic panel. For that reason, the two types of panel can be combined and installed in the same building without compromising the aesthetics or the acoustics.

Additionally, the Troldtekt A2 panel is lighter in weight which means that it is easier to handle than comparable panels with the same fire performance properties.

Width: 600mm
Length: 600mm / 1200mm / 2400mm

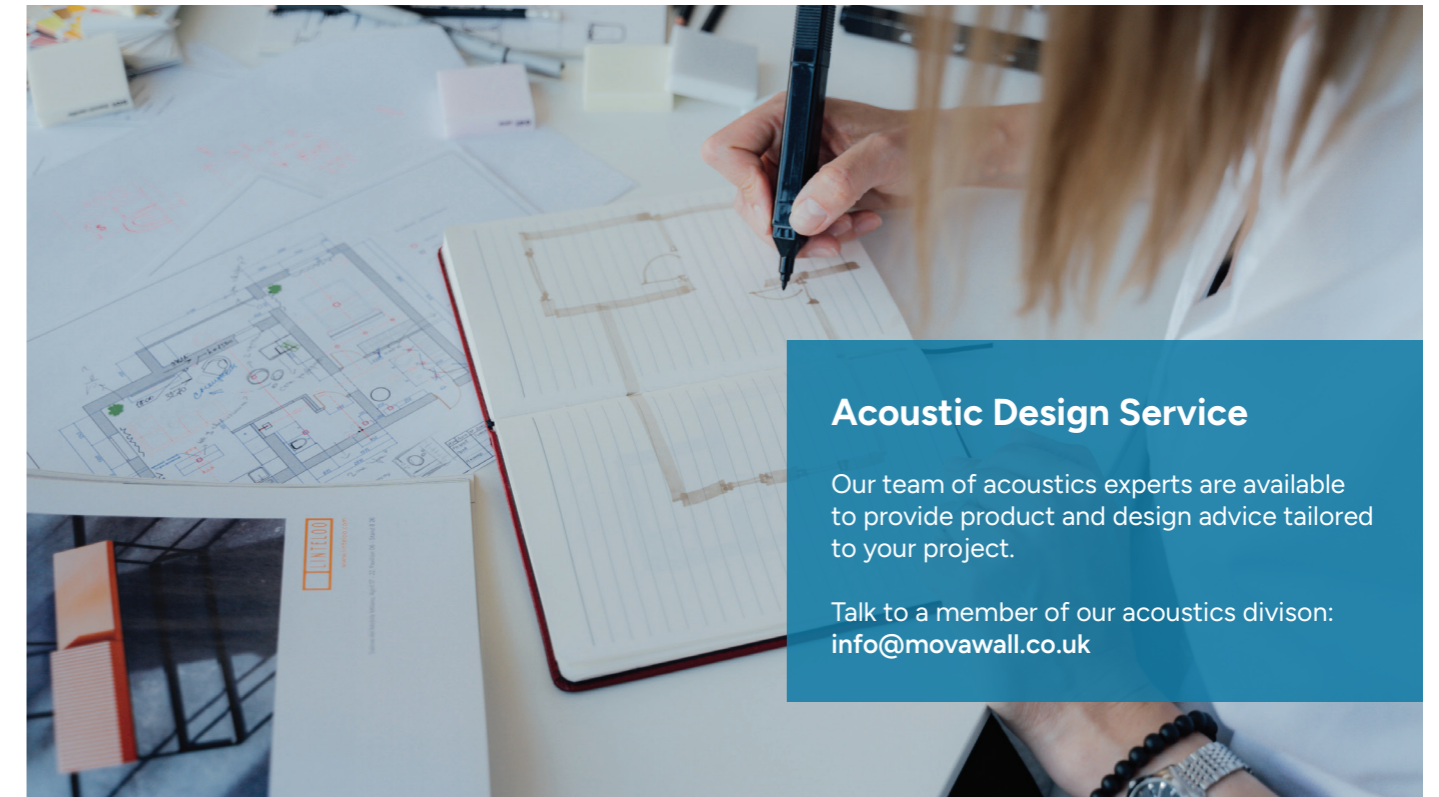
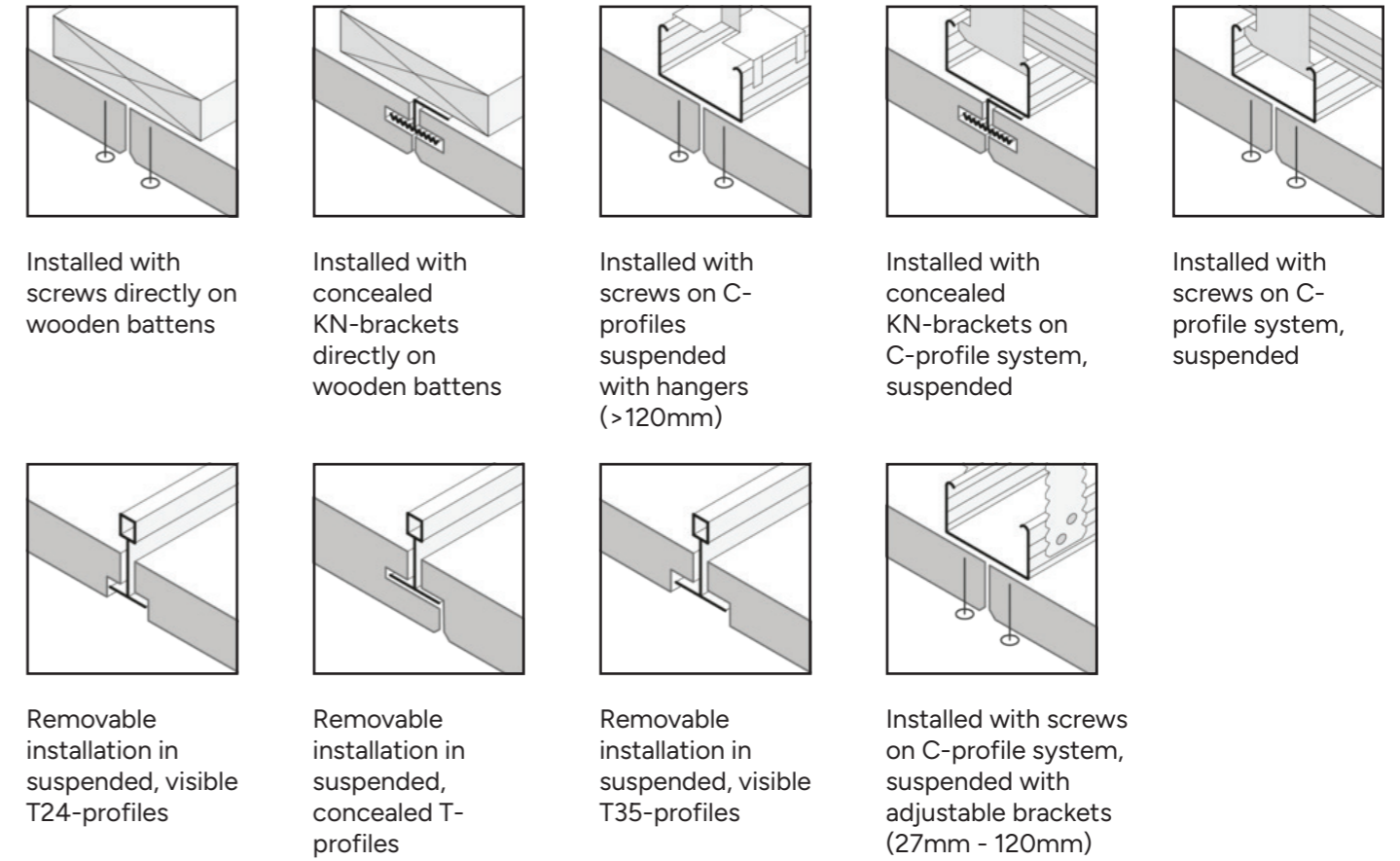
Thickness	25mm	35mm
Weight: Fine	13.1 (kg/m ²)	17.1 (kg/m ²)
Weight: Ultrafine	13.2 (kg/m ²)	17.6 (kg/m ²)
Weight: Extreme Fine	13.3 (kg/m ²)	17.8 (kg/m ²)

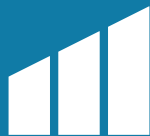
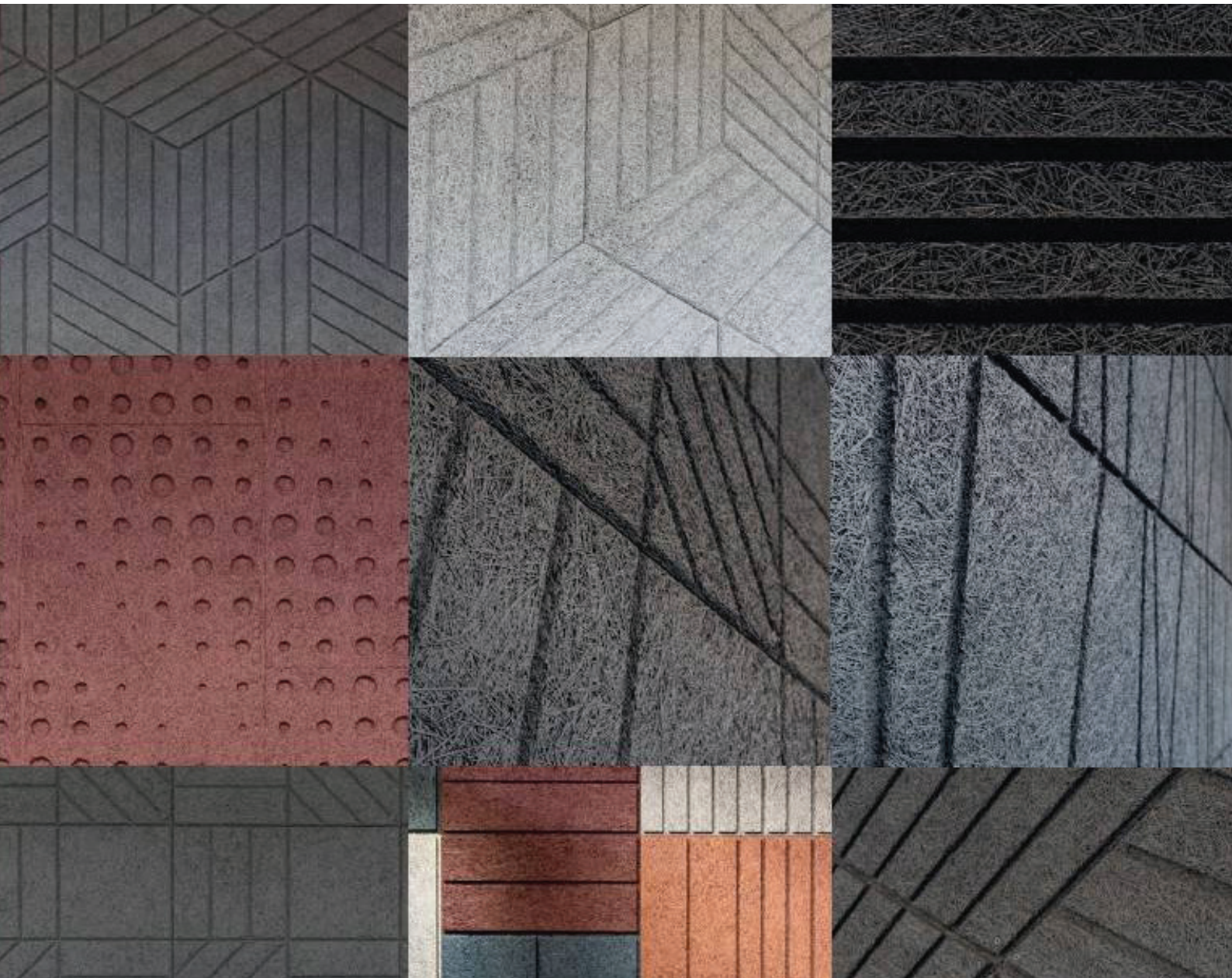


Edge Design



Installation Options





MOVAWALL

www.movawall.co.uk
info@movawall.co.uk

Scottish Office

01292 265 273

Movawall Scotland
11 Wellington Square,
Ayr, KA7 1EN

Head Office

020 8391 8750

London Wall Design Ltd,
63 Barwell Business Park,
Chessington, KT9 2NY

Northern Office

07703 322 082

Movawall Systems Ltd,
Unit 15 Bridge House Business Centre,
Harrow Road, Bolton, BL1 4NH