

M O V A W A L L

# Harmony Slatted Modular Wall & Ceiling Panels



Our slatted timber walls & ceiling products enable the designer to introduce warmth and character with a functional role. The prefabricated modular nature of the products construction allows a fast and accurate installation process.

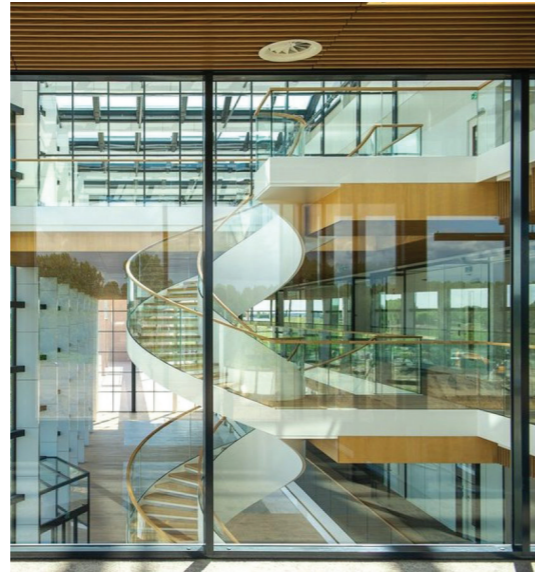
## Overview

Our Harmony Modular panel system is quick and simple to install and can complement a wide range of rooms. Fixing methods allow for fixed and demountable systems to be integrated into the product. Ceiling panels are installed onto a T24/T15 black ceiling grid.

The nature of the product allows slats to be set out around the services, if required and co-ordination to integrate, light fixture, sprinklers, access panels etc.

Quick and easy access for maintenance of services within the ceiling void. Wall panels are fixed via a black headed screw through the black timber cross-ties into battening behind.

- Class A acoustic performance
- Timber slatted wall & ceiling panels
- Quick & Easy access for future maintenance
- Lay-in grid modular ceiling panels



## Features

**Timber Slat Orientation:** Fin/Flat

**Timber Slat Standard Sizes:** 44mm (d/w) x 20mm (d/w), 69mm (d/w) x 20mm (d/w) - Other bespoke sizes available but consideration to module kgs needs to be considered if fitting within a grid

**Modular Panel Sizes:** 600x600, 600x1200, 600x1800

**Spacing:** Minimum 40% open space to achieve Class A Absorption

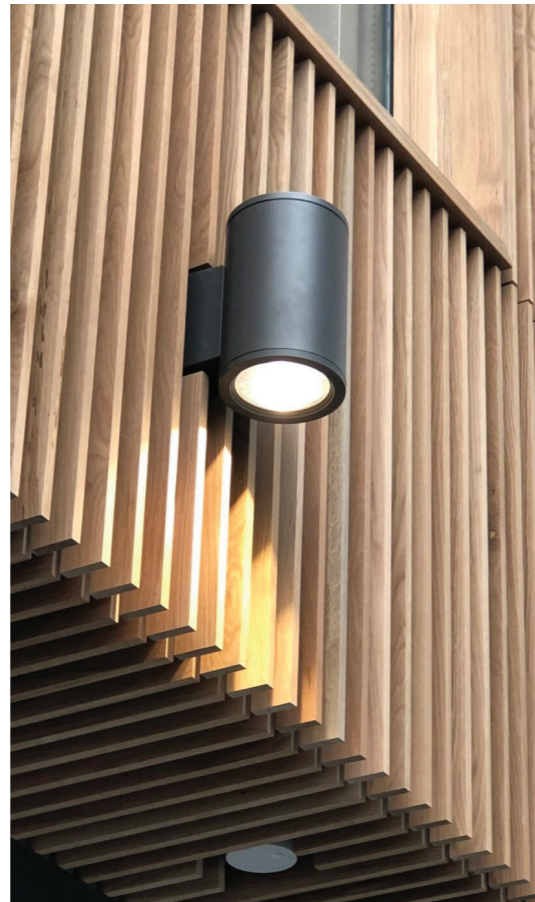
**Standard Timber Species:** European/American Oak, Ash, Beech, Douglas Fir, Walnut, Cherry, Birch - Staining available on request

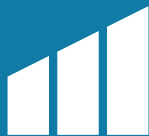
**Backing:** 9mm Black PET as standard

**Fire Rating:** PET and Lacquer System to B-S1,d0

**Slat Profile:** Square Edge as standard, other options available on request

**Insulation:** RWA45 Rockwool





MOVAWALL

---

[www.movawall.co.uk](http://www.movawall.co.uk)  
[info@movawall.co.uk](mailto:info@movawall.co.uk)

---

**Scottish Office**

01292 265 273

Movawall Scotland  
11 Wellington Square,  
Ayr, KA7 1EN

**Head Office**

020 8391 8750

London Wall Design Ltd,  
63 Barwell Business Park,  
Chessington, KT9 2NY

**Northern Office**

07703 322 082

Movawall Systems Ltd,  
Unit 15 Bridge House Business Centre,  
Harrow Road, Bolton, BL1 4NH