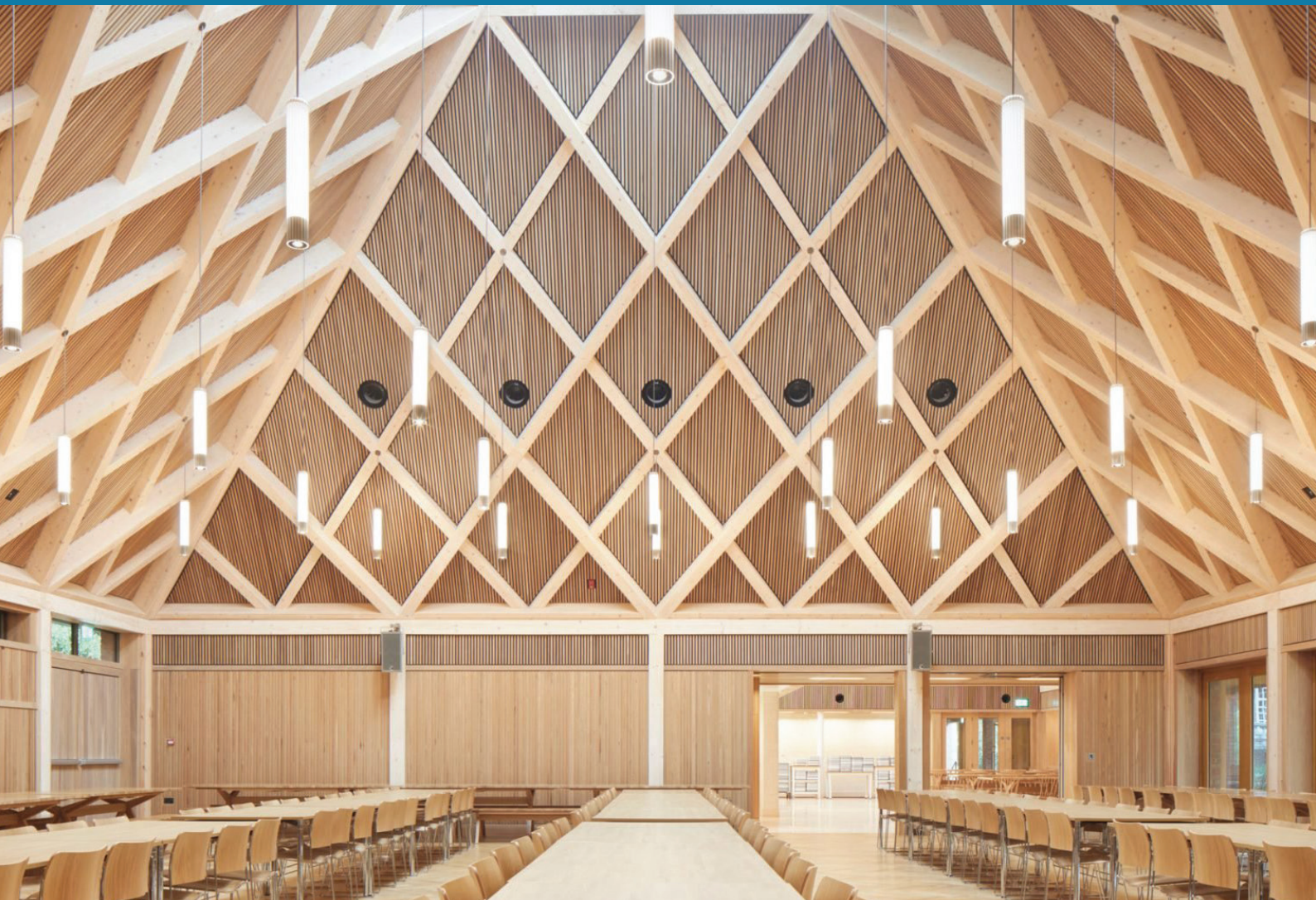


M O V A W A L L

Harmony Slatted Ceiling & Wall Panels



Suspended slatted timber acoustic ceilings and wall panels which can complement a wide range of room types. Harmony Slatted Panels are beneficial both acoustically and aesthetically, and intended for interior ceilings, wall panelling & balustrades etc.

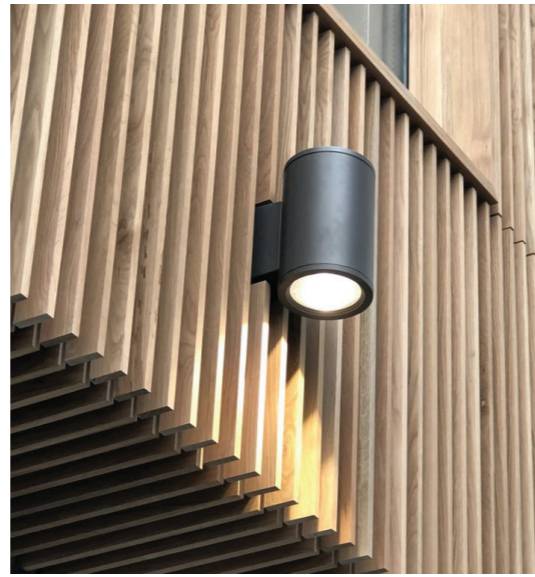
Overview

Our slatted timber walls & ceiling products enable the designer to introduce warmth and character with a functional role. The prefabricated modular nature of the products construction allows a fast and accurate installation process. Fixing methods allow for fixed and demountable systems to be integrated into the product.

Slat sizes & timber type to be specified by the client and are available up to class A performance

The nature of the product allows slats to be set out around the services, if required and co-ordination to integrate, light fixture, sprinklers, access panels, etc.

- Up to Class A acoustic performance
- Timber slatted wall & ceiling panels
- Fix & demountable fixings
- Fits around services



Features

Timber Slat Orientation: Fin/Flat

Timber Slat Standard Sizes: 44mm (d/w) x 20mm (d/w),
69mm (d/w) x 20mm (d/w)

Spacing: Minimum 40% open Space to achieve Class A Absorption

Standard Fixing Method for Walls: Direct to Timber Battens (50mm Depth)

Standard Fixing Method for Ceilings: Direct to Timber Battens (50mm Depth) or MF frame if a larger void required

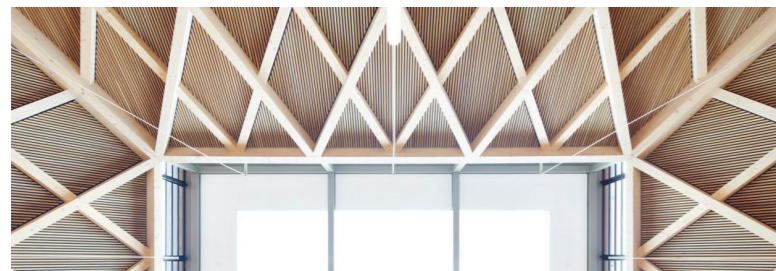
Standard Timber Species: European/American Oak, Ash, Beech, Douglas Fir, Walnut, Cherry, Birch - Staining available on request

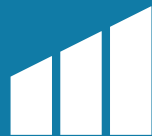
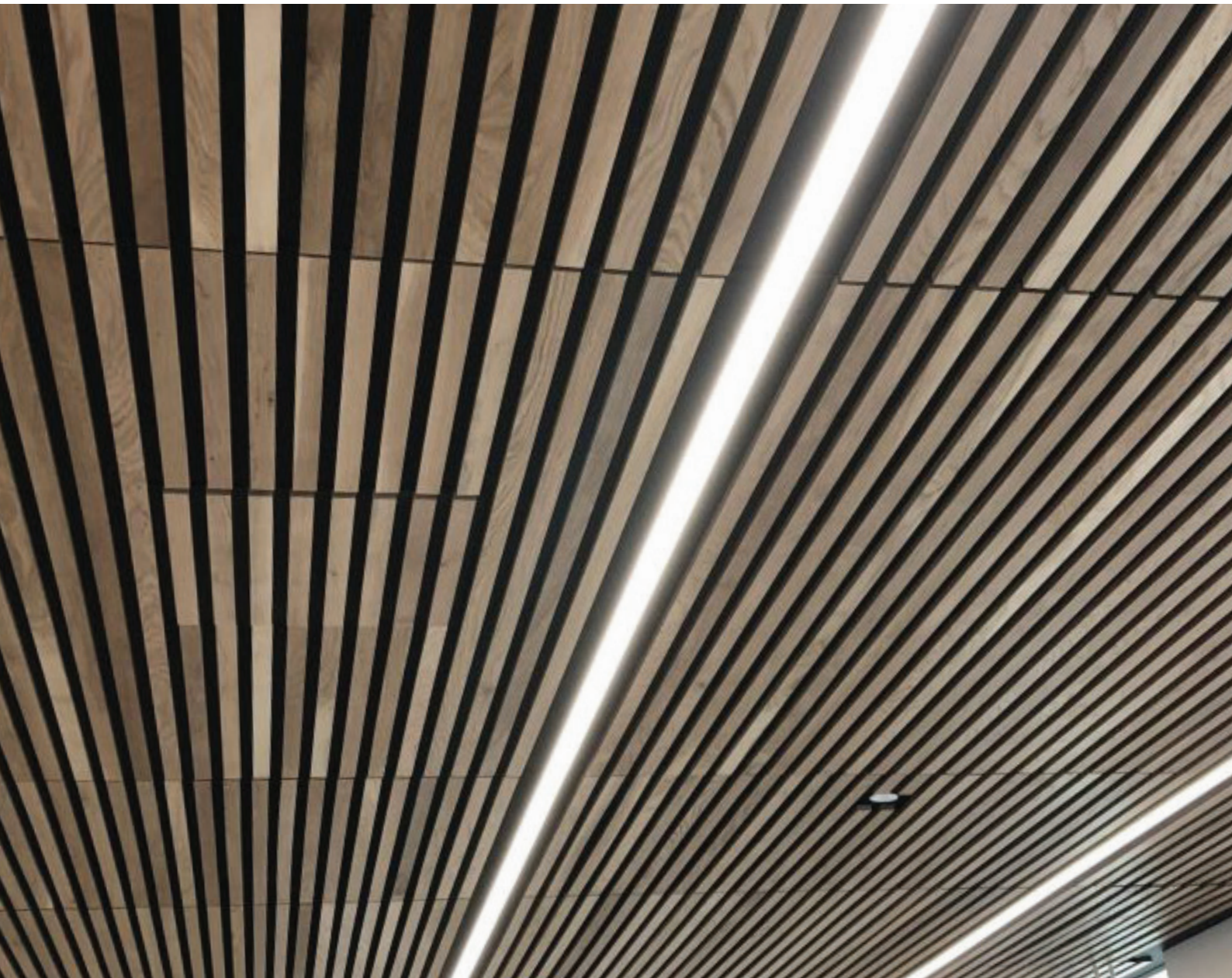
Backing: Macflex Universal Black to BS5867 Part 2 Type B
Framing: 15mm MDF

Fire Rating: Lacquer System to B-S1,d0

Slat Profile: Square Edge as Standard, other options available on request

Insulation: RWA45 Rockwool





M O V A W A L L

www.movawall.co.uk
info@movawall.co.uk

Scottish Office

01292 265 273

Movawall Scotland
11 Wellington Square,
Ayr, KA7 1EN

Head Office

020 8391 8750

London Wall Design Ltd,
63 Barwell Business Park,
Chessington, KT9 2NY

Northern Office

07703 322 082

Movawall Systems Ltd,
Unit 15 Bridge House Business Centre,
Harrow Road, Bolton, BL1 4NH